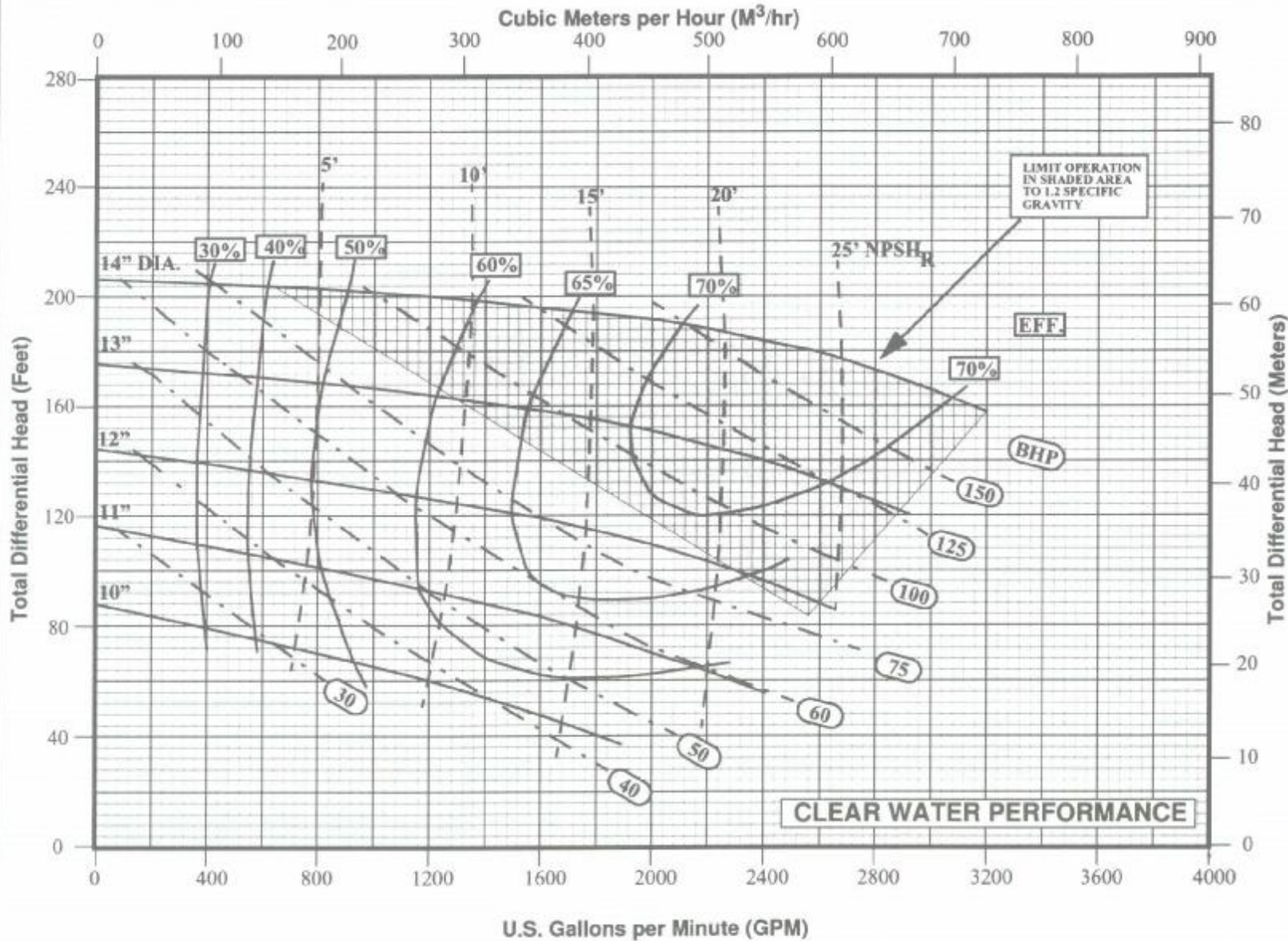




8 X 6 X 14 1750 RPM HALCO PUMP

2500 SUPREME



CALCULATING
HORSEPOWER
USING
EFFICIENCY

$$BHP = \frac{GPM \times FT \times SG}{3960 \times Efficiency}$$

$$KW = \frac{M^3/hr \times M \times SG}{367 \times Efficiency}$$

MAXIMUM SPHERE
1-3/8 INCH

HAL OILFIELD PUMP &
EQUIPMENT COMPANY

9455 Baythorne Drive

Houston, Texas 77041

Phone: (713) 939-8989

Fax: (713) 939-8112

CURVE
2586417